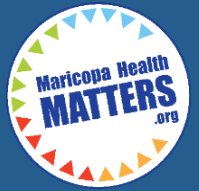


85323, 85353

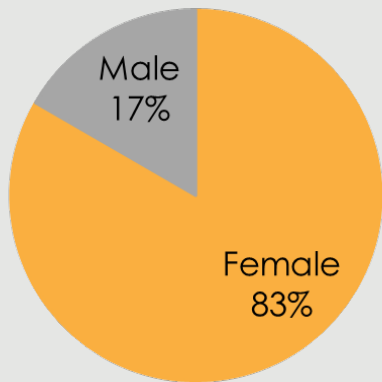
ZONE 32

Responses to the 2019 Community Health Assessment Survey from the residents of Zone 32.

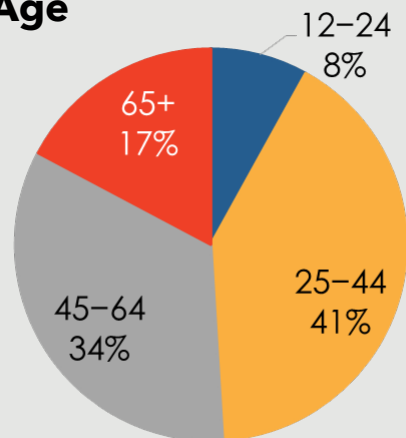


Who took the survey in Zone 32?

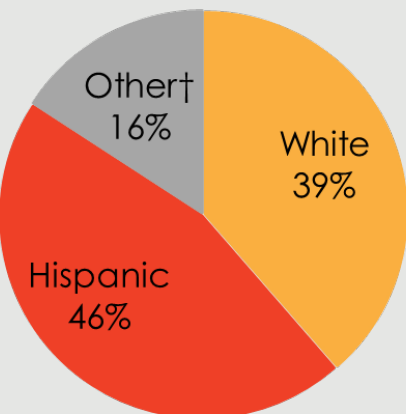
Gender



Age



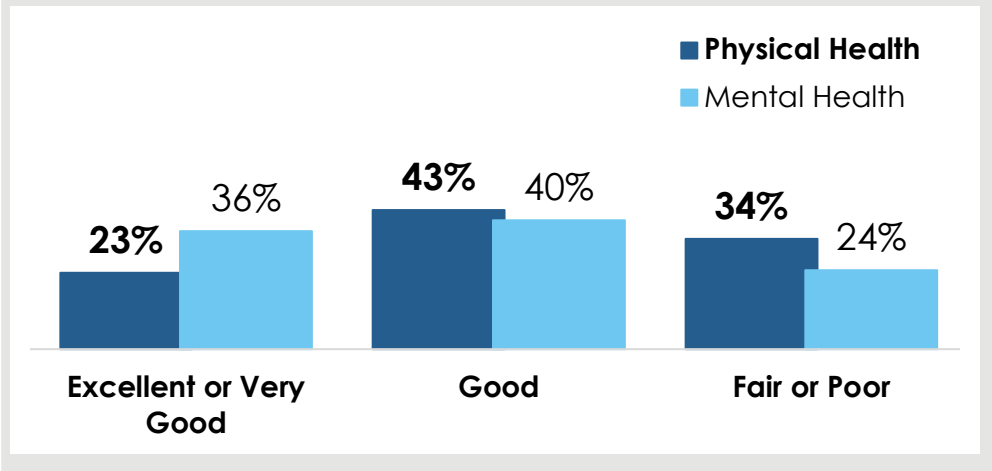
Race



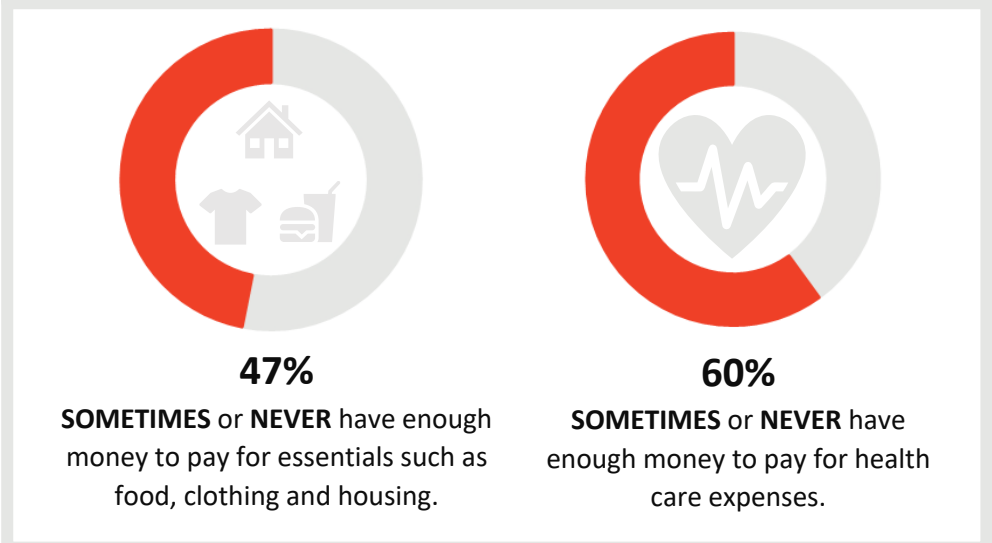
24%

reported a household income of **less than \$20,000.**

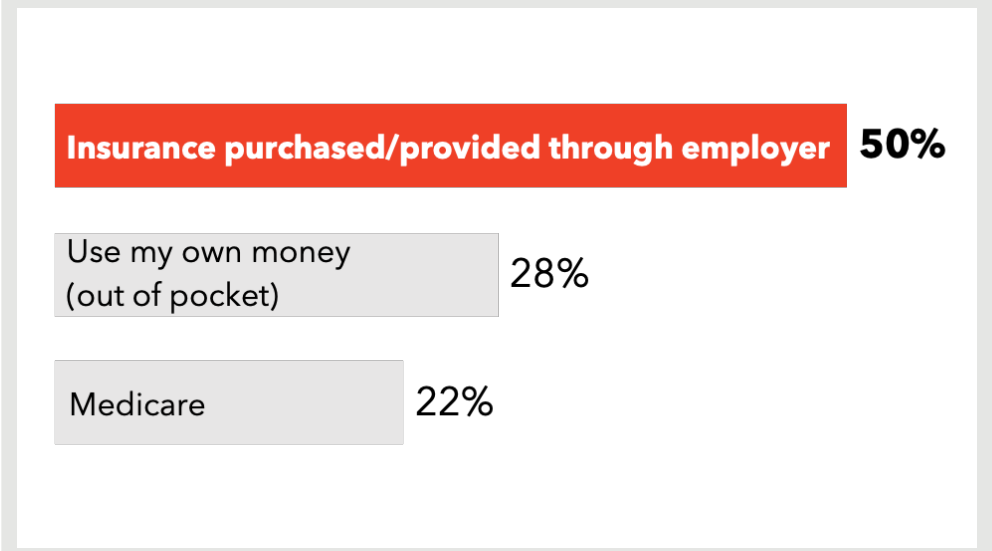
How do respondents in Zone 32 rate their Physical and Mental Health?



Do respondents in Zone 32 struggle each month to pay for medical care and/or necessities?



How do residents in Zone 32 pay for health care?



261 surveys collected.

Some demographic data may total over 100% due to rounding.

† Due to low response rates, the 'Other' category includes 'Asian', 'American Indian/Native American', 'Black or African American', 'Native Hawaiian or Other Pacific Islander', 'Multi-racial', and 'Other' responses or race/ethnicity.

TOP 3
COMMUNITY
STRENGTHS



Access to parks and recreation sites	----- 46%
Access to public libraries and community centers	----- 41%
Accepting of diverse residents and cultures	----- 37%

TOP
COMMUNITY
ISSUE



Distracted driving	----- 39%
Illegal drug use	----- 29%
Bullying/peer pressure	----- 24%

TOP
BARRIER TO
HEALTHCARE



Underinsured	----- 30%
Difficulty finding the right provider for my care	----- 29%
Inconvenient office hours	----- 27%

TOP 3
HEALTH
CONDITIONS



Alcohol or substance abuse	----- 57%
Overweight or obesity	----- 45%
Mental health issues	----- 40%

Want More?

- Find out how your city compares to other cities in Maricopa County.
- Submit a Data Request to obtain regional survey results.
- Join Synapse to partner with local organizations.

Contact:

[Eileen Aguilar](#)

(602) 859-4763

Eileen.Aguilar@maricopa.gov

Data Request:

<https://www.maricopa.gov/data-request>