

85045, 85041, 85339

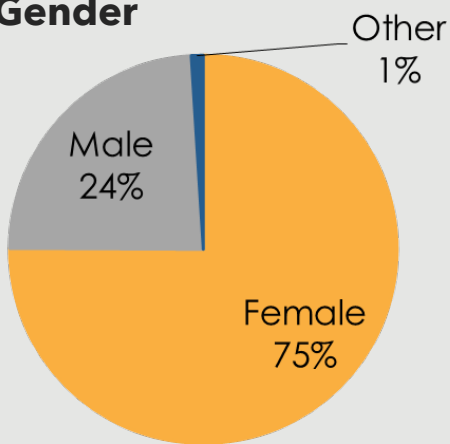


ZONE 31

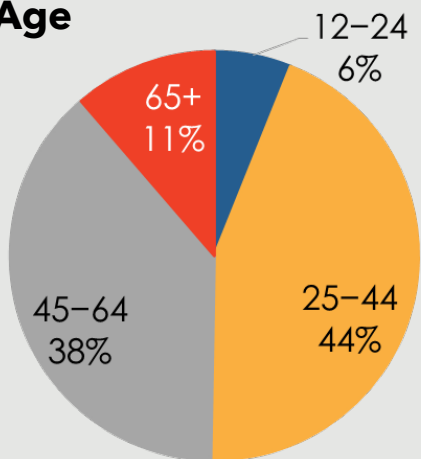
Responses to the 2019 Community Health Assessment Survey from the residents of Zone 31.

Who took the survey in Zone 31?

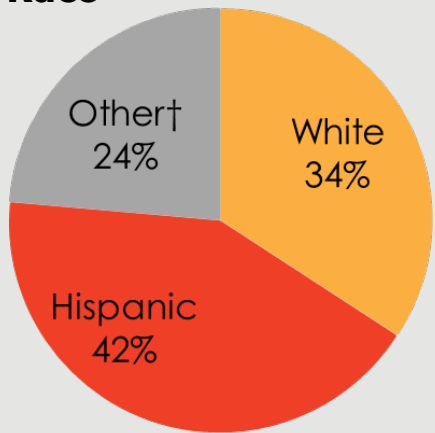
Gender



Age



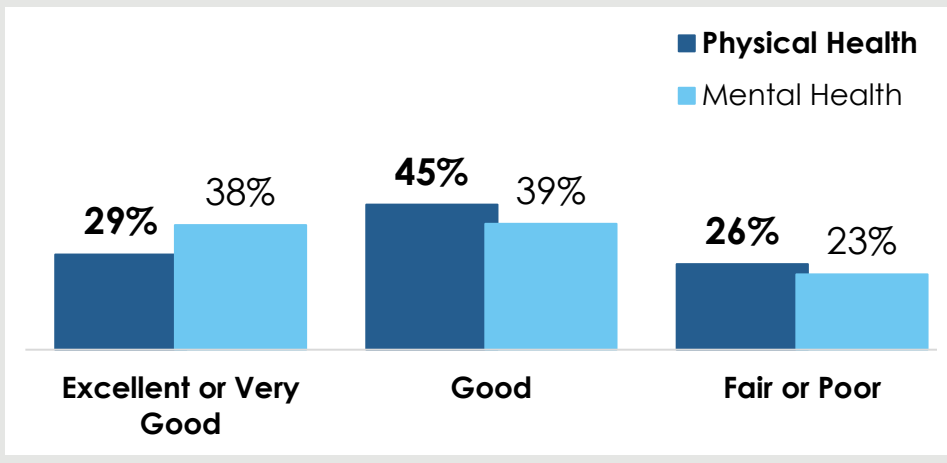
Race



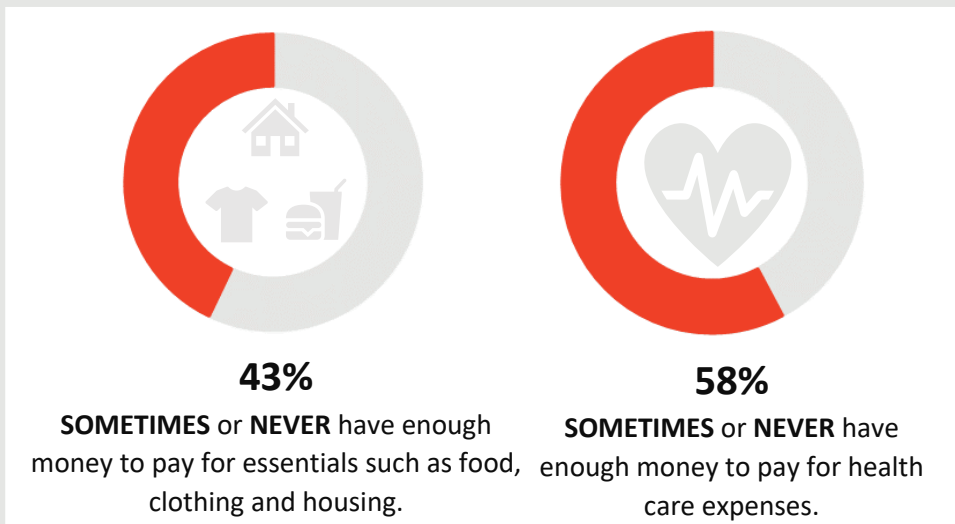
17%

reported a household income of **less than \$20,000.**

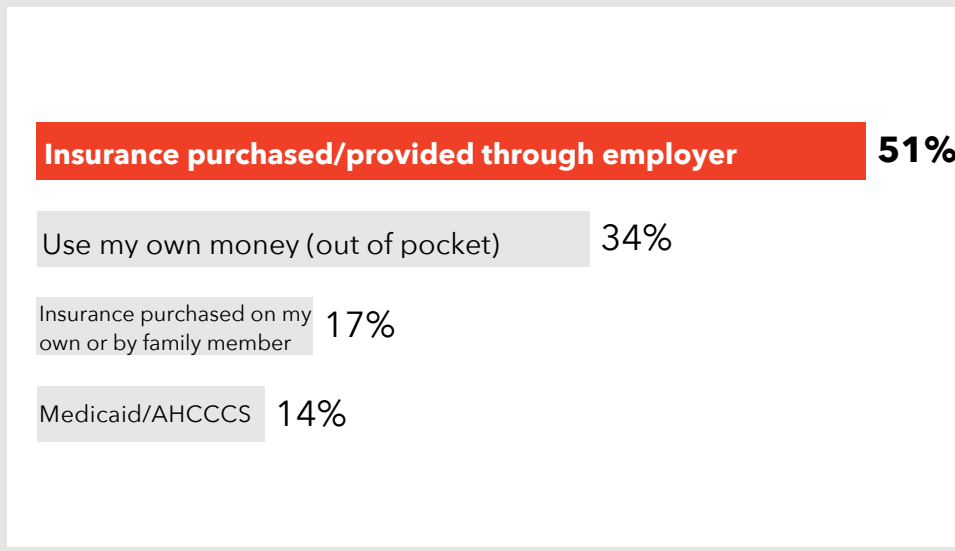
How do respondents in Zone 31 rate their Physical and Mental Health?



Do respondents in Zone 31 struggle each month to pay for medical care and/or necessities?



How do residents in Zone 31 pay for health care?



363 surveys collected.

Some demographic data may total over 100% due to rounding.

† Due to low response rates, the 'Other' category includes 'Asian', 'American Indian/Native American', 'Black or African American', 'Native Hawaiian or Other Pacific Islander', 'Multi-racial', and 'Other' responses or race/ethnicity.

Zone 31 Survey Respondents

TOP 3 COMMUNITY STRENGTHS



Access to parks and recreation sites	----- 54%
Access to public libraries and community centers	----- 48%
Accepting of diverse residents and cultures	----- 39%

TOP COMMUNITY ISSUE



Distracted driving	----- 41%
Illegal drug use	----- 27%
Homelessness	----- 25%

TOP BARRIER TO HEALTHCARE



Difficulty finding the right provider for my care	----- 40%
Underinsured	----- 32%
Distance to provider	----- 31%

TOP 3 HEALTH CONDITIONS



Alcohol or substance abuse	----- 54%
Overweight or obesity	----- 48%
Diabetes	----- 38%

Want More?

- Find out how your city compares to other cities in Maricopa County.
- Submit a Data Request to obtain regional survey results.
- Join Synapse to partner with local organizations.

Contact:

[Eileen Aguilar](#)

(602) 859-4763

Eileen.Aguilar@maricopa.gov

Data Request:

<https://www.maricopa.gov/data-request>