

85309, 85355, 85395, 85340, 85388

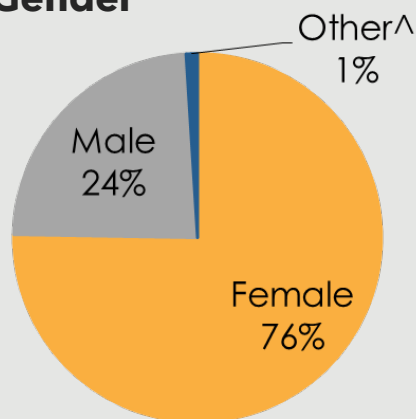


ZONE 21

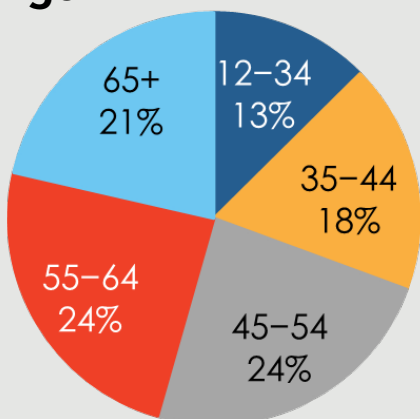
Responses to the 2019 Community Health Assessment Survey from the residents of Zone 21.

Who took the survey in Zone 21?

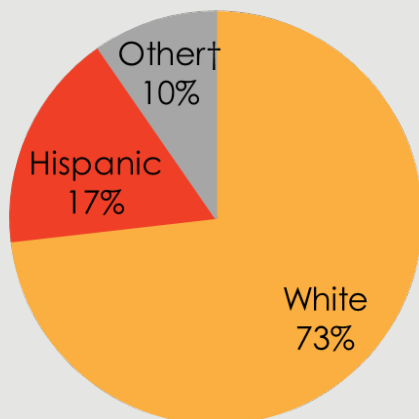
Gender



Age



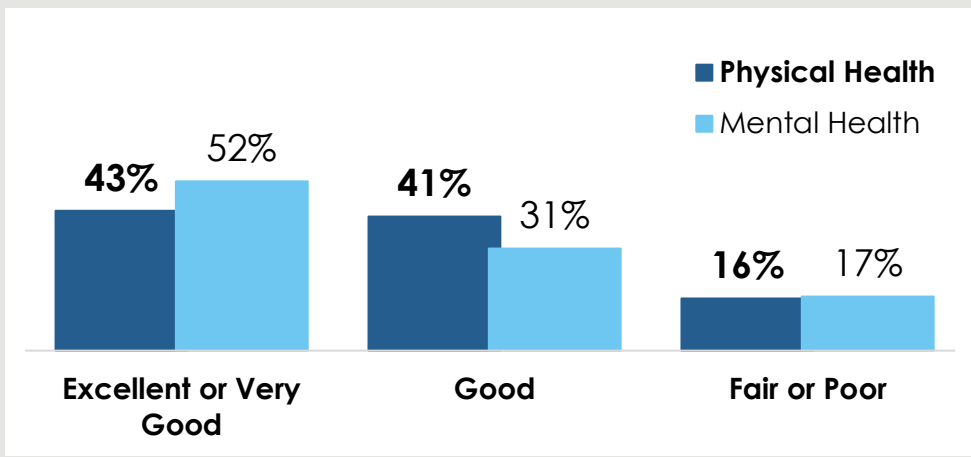
Race



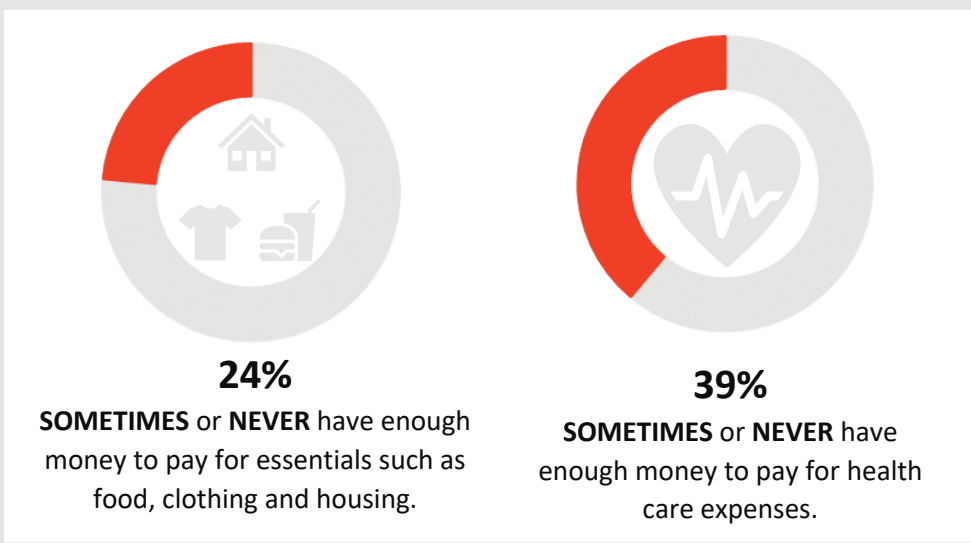
10%

reported a household income of **less than \$20,000.**

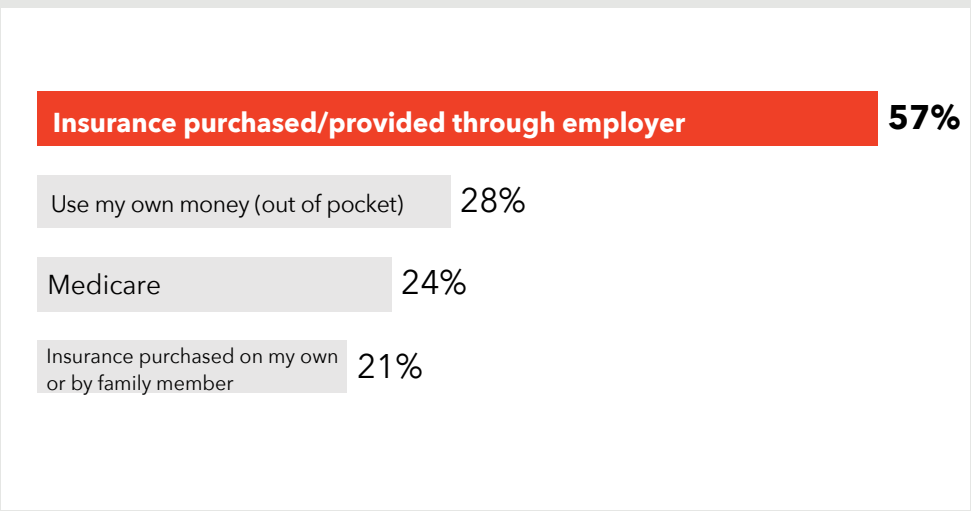
How do respondents in Zone 21 rate their Physical and Mental Health?



Do respondents in Zone 21 struggle each month to pay for medical care and/or necessities?



How do residents in Zone 21 pay for health care?



294 surveys collected.

Some demographic data may total over 100% due to rounding.

[^] The 'Other' category includes 'Transgender' responses for gender.

[†] Due to low response rates, the 'Other' category includes 'Asian', 'American Indian/Native American', 'Native Hawaiian or Other Pacific Islander', 'Black or African American', 'Multi-racial', and 'Other' responses or race/ethnicity.

TOP 3
COMMUNITY
STRENGTHS



Access to parks and recreation sites ----- 63%

Clean environments and streets ----- 54%

Low crime/safe neighborhoods ----- 52%

TOP 3
COMMUNITY
ISSUES



Distracted driving ----- 57%

Lack of public transportation ----- 33%

Lack of good jobs ----- 20%

TOP 3
BARRIERS TO
HEALTHCARE



Difficulty finding the right provider for my care ----- 37%

Inconvenient office hours ----- 33%

Underinsured ----- 30%

TOP 3
HEALTH
CONDITIONS



Overweight or obesity ----- 40%

Alcohol or substance abuse ----- 39%

Cancers ----- 34%

Want More?

- Find out how your city compares to other cities in Maricopa County.
- Submit a Data Request to obtain regional survey results.
- Join Synapse to partner with local organizations.

Contact:

[Eileen Aguilar](#)

(602) 859-4763

Eileen.Aguilar@maricopa.gov

[Data Request:](#)

<https://www.maricopa.gov/data-request>