

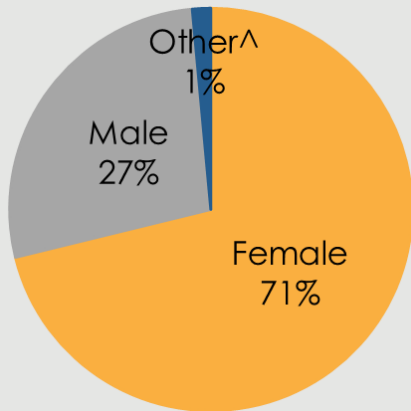
CITY OF SCOTTSDALE

Responses to the 2019 Community Health Assessment Survey from the residents of Scottsdale.

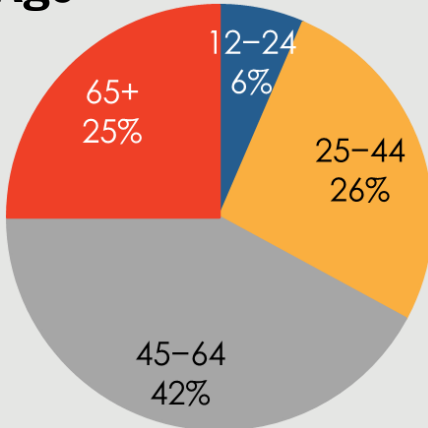
Who took the Survey in Scottsdale?

.....

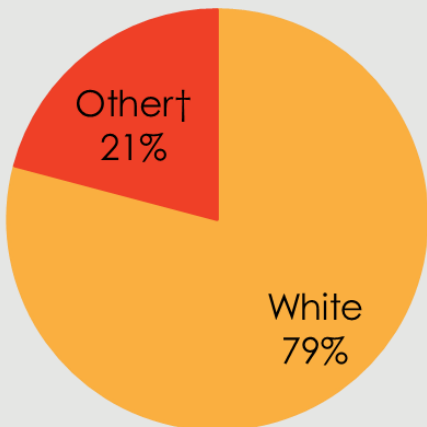
Gender



Age



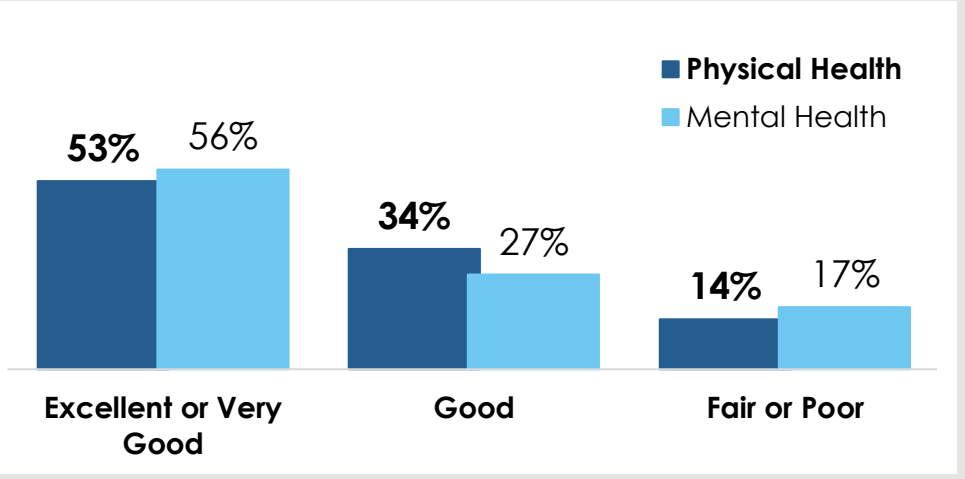
Race



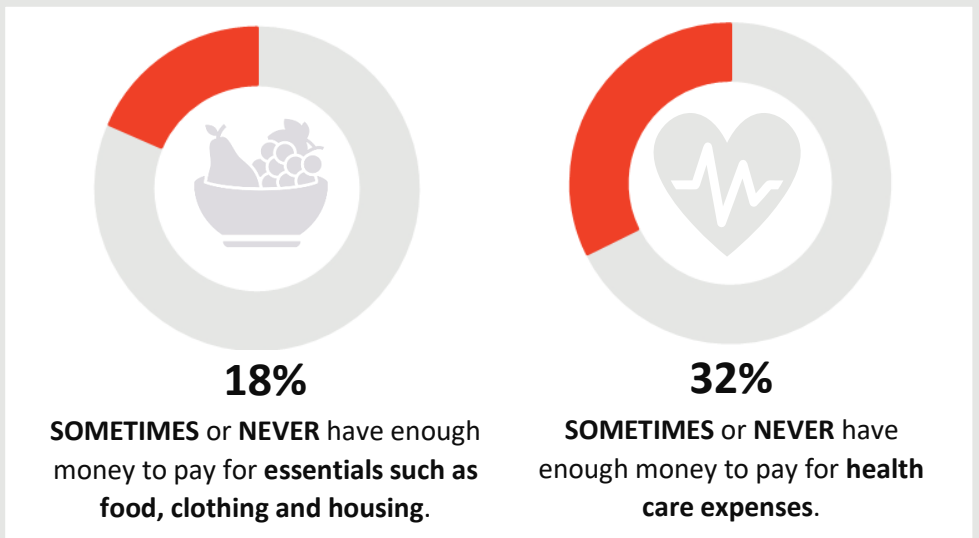
9%

reported a household income of **less than \$20,000.**

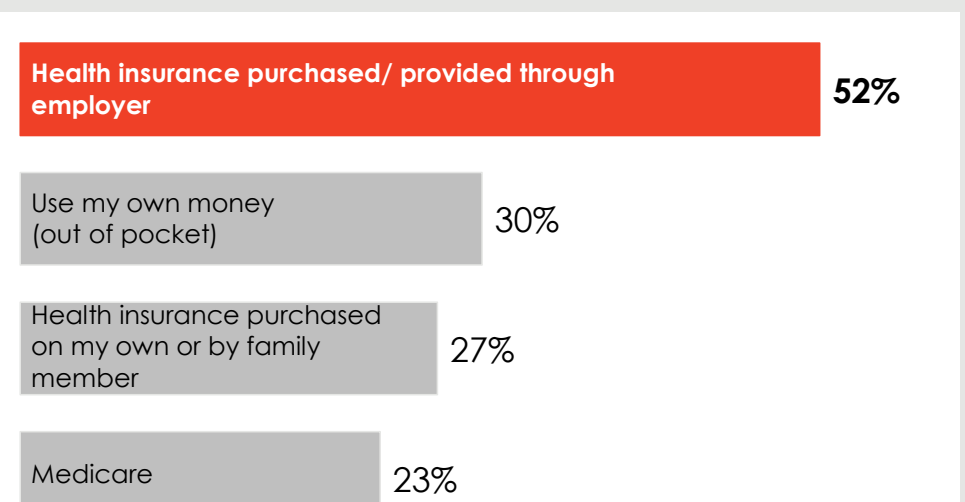
How do Scottsdale respondents rate their Physical and Mental Health?



Do Scottsdale respondents struggle each month to pay for medical care and/or



How do Scottsdale residents pay for health care?



483 surveys collected.

Some demographic data may total over 100% due to rounding.

[^] The 'Other' category includes 'Transgender' responses for gender.

[†] Due to low response rates, the 'Other' category includes 'Asian', 'Native Hawaiian', 'Alaska Native', 'American Indian/Native American', 'Hispanic or Latino', 'Black or African American', 'Multi-racial', and 'Other' responses or race/ethnicity.

The City of Scottsdale Survey Respondents

TOP 3 COMMUNITY STRENGTHS



Access to Parks and Recreation Sites	-----	70%
Access to Public Libraries and Community Centers	-----	63%
Clean Environments and Streets	-----	60%

TOP 3 COMMUNITY ISSUES



Distracted Driving	-----	61%
Lack of Affordable Housing	-----	30%
Lack of Public Transportation	-----	26%

TOP 3 BARRIERS TO HEALTHCARE



Underinsured	-----	41%
Difficulty Finding the Right Provider for my Care	-----	34%
Inconvenient Office Hours	-----	30%

TOP 3 HEALTH CONDITIONS



Alcohol or Substance Abuse	-----	48%
Mental Health Issues	-----	43%
Overweight or Obesity	-----	39%

Want More?

- Find out how your city compares to other cities in Maricopa County.
- Submit a Data Request to obtain regional survey results.
- Join Synapse to partner with local organizations.

Contact:

[Eileen Aguilar](#)

(602) 859-4763

Eileen.Aguilar@maricopa.gov

Data Request:

<https://www.maricopa.gov/data-request>