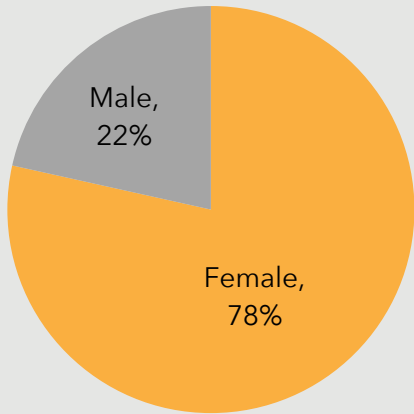


Southwest Valley

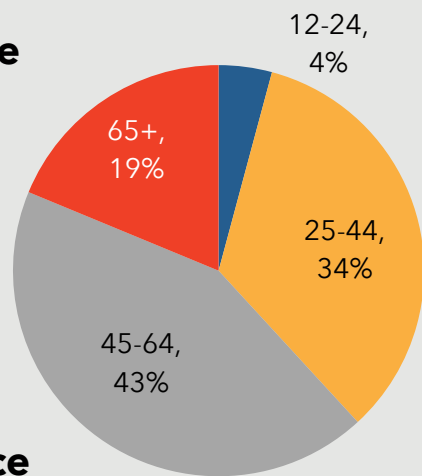
Responses to the 2019 Community Health Assessment Survey from the residents in the Southwest Valley.

Who took the survey in the Southwest Valley?

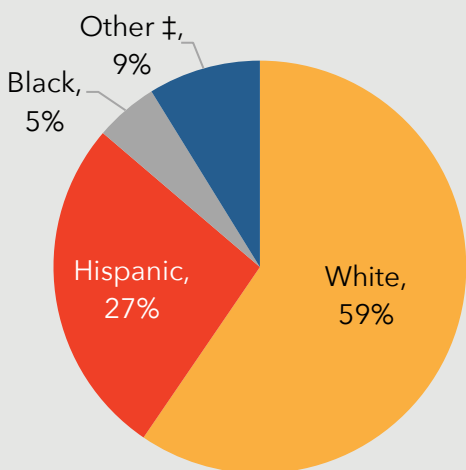
Gender



Age

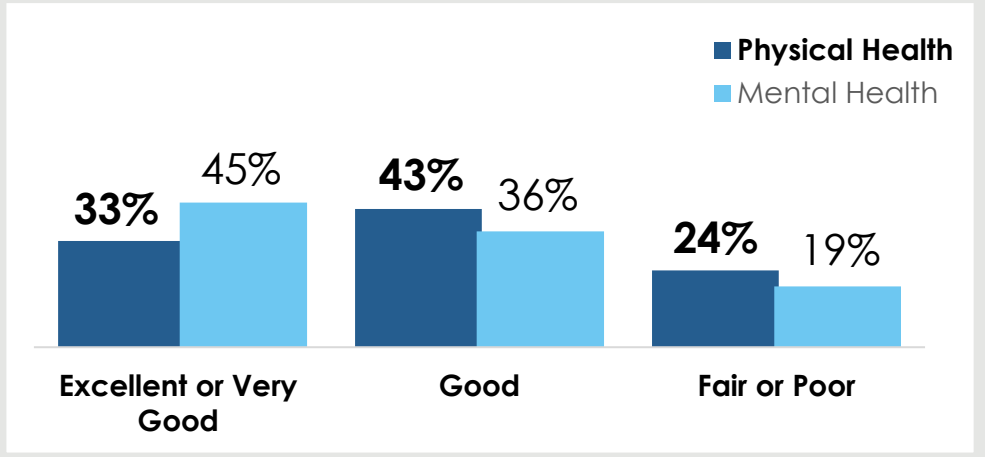


Race

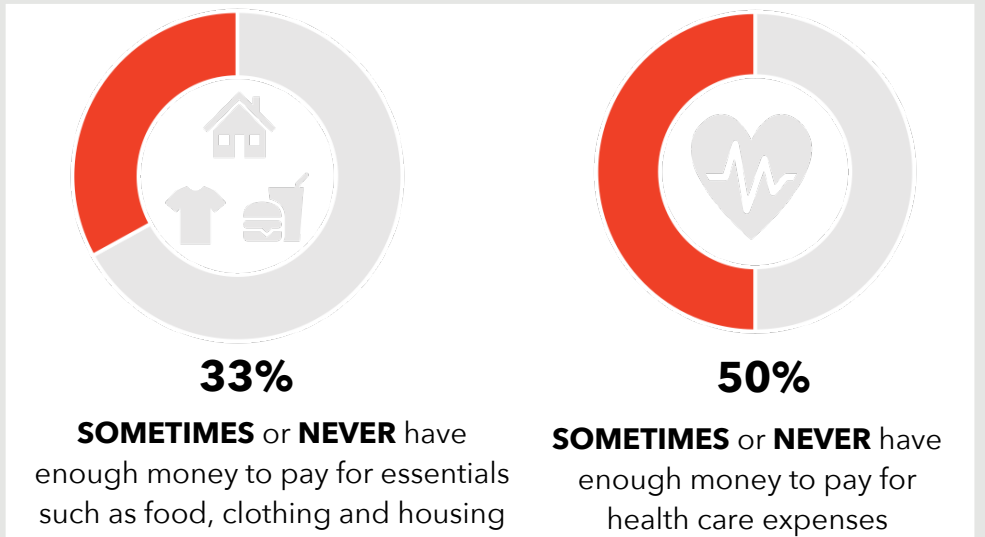


13% reported a household income of **less than \$20,000.**

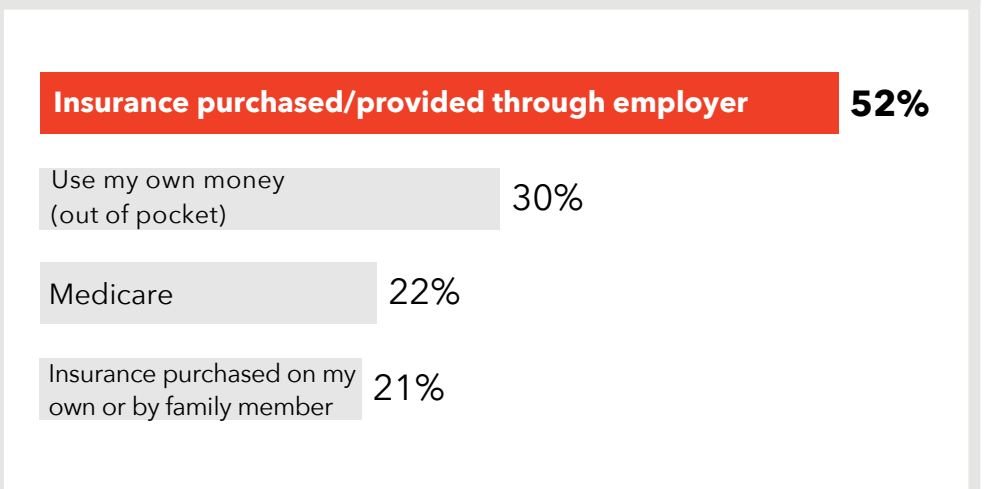
How do respondents in the Southwest Valley rate their Physical and Mental Health?



Do respondents in the Southwest Valley struggle each month to pay for medical care and/or necessities?



How do residents in the Southwest Valley pay for their health care?



1389 surveys collected.

‡ Due to low response rates, the 'Other' category includes 'Asian', 'American Indian/Native American', 'Multi-racial' and 'Other' responses or race/ethnicity.

TOP 3
COMMUNITY
STRENGTHS



Access to parks and recreation sites	-----	54%
Clean environments and streets	-----	42%
Access to public libraries and community centers	-----	41%

TOP 3
COMMUNITY
ISSUES



Distracted driving	-----	46%
Lack of public transportation	-----	27%
Lack of good jobs	-----	26%

TOP 3
BARRIERS TO
HEALTHCARE



Difficulty finding the right provider for my care	-----	35%
Distance to provider	-----	30%
Underinsured	-----	28%

TOP 3
HEALTH
CONDITIONS



Alcohol/substance abuse	-----	47%
Overweight/obesity	-----	44%
Mental health issues	-----	34%

Want More?

- Find out how your city compares to other cities in Maricopa County.
- Submit a Data Request to obtain regional survey results.
- Join Synapse to partner with local organizations.

Contact:

[Eileen Aguilar](#)

(602) 859-4763

Eileen.Aguilar@maricopa.gov

[Data Request:](#)

<https://www.maricopa.gov/data-request>